

activPilot Control RFID

A new benchmark in window surveillance systems.



in
windows

Sensors for a unique surveillance system.

In Germany, about 380,000 burglaries happen per year. From a statistical point of view, this means there is a break-in every two minutes, with burglars mainly entering through windows or patio doors. It's not only luxury mansions which are affected by such crimes – family homes and flats in apartment buildings are too. Only one in five cases of burglary is solved. Protecting property requires more effective burglary resistance and surveillance systems. Winkhaus offers an unrivalled solution – activPilot Control RFID.

Window fittings with RFID

Winkhaus has developed a new dimension in window surveillance systems with a pioneering technological design for window fittings – the fitting-integrated lock sensor with RFID transponder technology. Unique on the market, this window fitting replaces the standard magnetic alarm contact in such systems by an RFID-controlled lock sensor.

This technology enhances protection against deliberate damage and tampering of lock surveillance systems – a valuable contribution to security in buildings and a milestone in window technology.

RFID Technology

RFID stands for “Radio Frequency Identification” and refers to transponder technology used with contactless data storage devices – successfully implemented in access and control systems such as Winkhaus' BlueChip system.

RFID technology: The transponder is integrated into the window sash and the lock sensor into the frame.

Both “partners” have a matching code.





The incorruptible system.

Unfailingly reliable

The exceptionally high level of security offered by the RFID system is a result of the contactless transmission between the window sash and the window frame. The window sash holds a transponder while the frame contains the corresponding lock sensor. These two components form a unique pair and communicate with one another via an individually coded contactless connection.

When the window sash is closed and locked, the transponder is passed over the lock sensor and the sensor detects its presence. The sensor relays the identification data to a burglar alarm. If a different transponder comes near the contact, the system detects it is different and immediately sets off the alarm.

Superior right down to the last detail

The activPilot Control RFID system was developed on the basis of Winkhaus' successful activPilot product line. The basic activPilot system alone stands out due to its solid burglary resistance and outstandingly tight seal when shut. Due to the innovative octagonal locking bolt, the window seal can be easily adjusted by hand. All activPilot systems are of exceptional quality including intelligent design and an attractive finish.

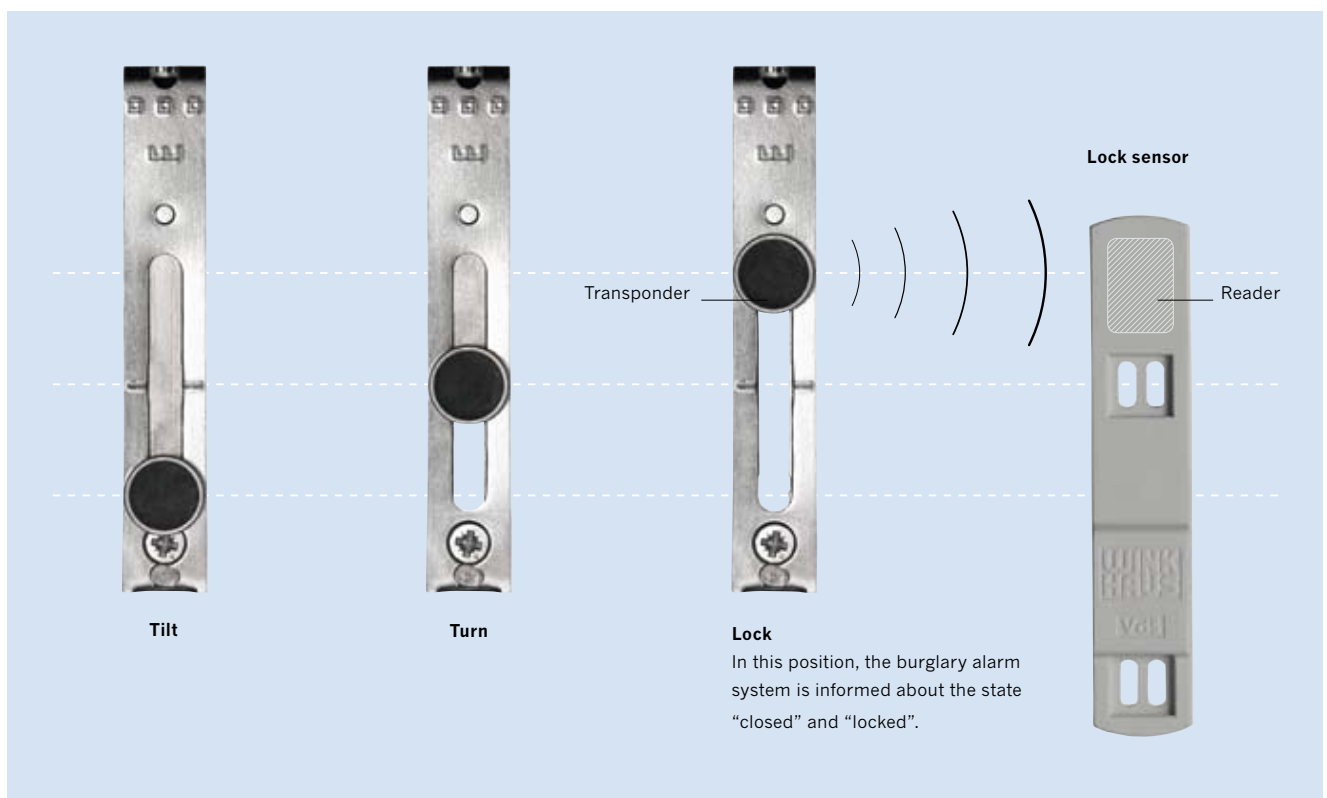
RFID technology is the crowning part of this product line. Any forceful entries or attempts at tampering with the lock surveillance system are signalled to the burglary alarm system. The advantage it has over conventional systems lies in its tampering protection system. The RFID system allows for greater dimension tolerances, which increases reliability and makes installation easier.

Winkhaus Plus

- + Status signal if there is a forced break-in
 - + Unrivalled tampering protection system
 - + Easily installed in activPilot window fittings and aluminium fittings with open drive rods
 - + VdS approval class C
VdS no. G 108093
-

Transponder and lock sensor communicate with one another using a contactless system.

Any break-ins or attempts at tampering are immediately reported by the system and set off the alarm.



A new dimension in window security.

Intelligent technology for the future

The activPilot Control RFID system enables Winkhaus to set new standards in tampering protection systems for windows and French doors. Highly developed transponder technology has been integrated in window fittings for the first time, an advance which was made possible due to intensive research and product development by Winkhaus engineers.

Years of experience in developing and producing intelligent access control systems, specifically Winkhaus BlueChip, have provided a solid basis for this system.

A patent has been filed for the activPilot Control RFID system.



Winkhaus Plus

For the window builder

- + The lock sensor system can be directly integrated into the Winkhaus activPilot fitting
- + Innovative lock surveillance system based on state-of-the-art technology
- + Greater reliability as larger rebate tolerances are permitted
- + Comfortable fitting thanks to profile-adapted frame parts

For the fitting and building component dealer

- + Innovative lock surveillance system based on state-of-the-art technology
- + Can be used for 9 and 13 mm groove positions
- + Universal: only one frame component required for use in the most common profile systems

For users, planners and fitters

- + Optimum protection against deliberate damage and tampering with state-of-the-art technology
- + Greater reliability with large rebate tolerances
- + Aesthetic design
- + VdS approval class C VdS no. G 108093

Aug. Winkhaus GmbH & Co. KG

August-Winkhaus-Straße 31

D-48291 Telgte

T +49 (0) 25 04-921-0

F +49 (0) 25 04-921-340

www.winkhaus.de

fenstertechnik@winkhaus.de

